

Z4 Function and use instructions (V01)



Version record

Date	version	Firmware version	Modules	Change Description
2023.04.14	V01	V100		First edition



Contents

1 Device parameters.....	4
1.1 Hardware and firmware version numbers.....	4
1.2 Basic Parameters.....	4
2 Setting Description	5
2.1 Operating Instructions	5
2.2 Interface Description.....	6
2.2.1 Normal Parts	6
2.2.2 Hidden Parts (for internal maintenance only)	13
3 Instructions for use.....	15
3.1 Button Indicator.....	15
3.2 Consumption Mode.....	15
3.3 Interface Display.....	16
4. Parameter setting.....	19
4.1 PC Platform operation instructions	19
4.2 Operation Instructions for Mobile platforms	21
4.3 Installation Instructions.....	21
5 Function Description.....	22
5.1 Full Power Off.....	22
5.2 Power off with no load.....	22
5.3 Ultimate Power	22
5.4 Standard Power	22
5.5 Maximum charging duration.....	23
5.6 Temperature Alarm.....	23
5.7 Local Card refund.....	23
5.8 Power off Memory.....	23
5.9 Stop/Restore (can only be used when no channel is working).....	24
5.10 Remote Upgrade	24
5.11 Obtain network parameters again.....	24
5.12 Soft Restart manually	24



1 Device Parameters

1.1 Hardware and firmware version numbers

Device type	Motherboard version	Display board version	Factory firmware
Z4	A1-02-A1-12-R330-E6M	Z1E6M-V100-20230309-R1	V100

1.2 Basic Parameters

Name	Parameters
Input power	AC220V / 50HZ
Standby power	< 5W
Output power	Single channel Max 1000W
Machine power	$\leq 8000W$
Operating temperature	The normal operating temperature of the device ranges from -10 to 70 ° C
Measurement error	< 2%
Billing model	Time/metered/free



Type of networking	4G
Consumption patterns	Local card/Virtual card/mobile phone/one-click boot

Note: The metering error refers to the working power and actual power consumption error of a single channel, excluding the power consumption of the charging station itself

2 Setting Instructions

2.1 Operating Instructions

Features	Instructions
Enter/exit	<p>1. Press button No. 7 first and press button No. 6 for 4s within 3s to enter the setup screen</p> <p>2. Hold down 1 for 6 seconds to save data and exit the setting screen</p> <p>Note: If there is no operation in the setting interface for 30 minutes, the data will be saved and exit automatically</p>
Interface switching	<p>The "6" button is used to switch the interface up</p> <p>The "12" button is the down switching</p>



	interface
Adjust parameters	The "number 8" button is plus The "9" button is a minus
Hide the interface	Enter the F1 interface and press the "No. 6" button 5 times to enter the hidden interface (for internal maintenance use only)

2.2 Interface Description

2.2.1 Normal Parts

Interface	Features	Factory default	Instructions
F1	Show signal strength	255	Current signal value (255 on display) Display range 0-31
F2	Display temperature		-30C to 150C
F3	Adjust volume	Vo-5	0-7, adjustment amplitude 1



F4	Local card cancellation amount	1 yuan	\$0- \$9 with an adjustment margin of \$0.01
F5	Local card de-tagged power/time	Time 4 hours 1 degree of electri city	Timing mode: time 1- 1440min, adjustment range 1min Metering mode: 0-9 degrees of electricity, adjustment range of 0.01 degrees
F6	Coin cancellation amount	1 yuan	Non-adjustable
F7	Coin cancellation power/time	Time 4 hours 1 degree of electri city	Timing mode: time 1- 1440min, adjustment range 1min Metering mode: 0-9 degrees of electricity, adjustment range of 0.01 degrees



F8	Monthly card duration (hours)	10H	0-24H, adjustment amplitude 1H
F9	Duration of a single purchase with monthly card (minutes)	0min	0-59min, adjust the amplitude for 1min
F10	Full blackout power	7W	0-990W, adjust amplitude 1, adjust to 0W to turn off this feature
F11	Full blackout time (min.)	60min	1min- 99min, adjust for 1min
F12	Full power off time (seconds)	0S	0S-59S, adjustable for 1S
F13	No-load power off	0.5 W.	0-100W, adjustment amplitude: when greater than 1W, the adjustment



			amplitude is 1; When it is less than 1W, the adjustment amplitude is 0.1 Adjust to 0W to turn off this feature
F14	No-load power off time (seconds)	20S	5S-10min, adjust for 1S
F15	Ultimate power	1000W	0-1000W, adjustment amplitude 1
F16	Standard power	220W	0-990W, adjustment amplitude 1, set to 0 to turn off this function (not adjustable in metering mode)
F17	Get the network parameters again	n-0	Press 8 for voice announcement to get network parameters again



F18	Total amount of coin placed	0	Display range 0-9999 yuan
F19	Accumulated credit card amount	0	Display range 0-9999 yuan
F20	Clear channel time	C-0	Switch to C-1 to stop all channel charging
F21	Local card switch	Cb-1	Set to Cb-0 to turn off local card spending
F22	Virtual card switch	Cu-1	Set to Cu-0 to turn off virtual card spending
F23	Time card switch	CP-1	Switch to CP-0 to turn off the monthly card time limit switch
F24	Limit card switch	L-1	Set to L-0 to close the monthly card limit, and the number of purchases is not deducted



F25	Change Password Switch	Pd-1	Setting to Pd-0 does not allow you to change your credit card spending password
F26	Refund switch	Cr-1	Turn to Cr-0 for refunds for local card purchases that are not allowed
F27	Factory restore	E-0	Adjust to E-1 recovery: Volume, local, monthly and coin consumption standards, full and no-load power off parameters, limit power, standard power, local card, virtual card, limited time limit, change password and refund switch, switch SIM card platform to the initial value



F28	Network cancellation amount	1 yuan	Non-adjustable
F29	Network de- tagged power/time	4 hours	Non-adjustable
F30	Adjust the year	2015	Adjustment range 2015- 2099, network automatic update
F31	Adjusting month	01	Adjustment range 01-12, network automatic update
F32	Adjusting days	01	Adjust range 01-31, network update automatically
F33	Adjusting hours	00	Adjustment range 00-23, network automatic update



F34	Adjust minutes	00	Adjustment range 00-59, network automatic update
-----	-------------------	----	--

2.2.2 Hidden parts (for internal maintenance use only)

Inter face	Features	Factory default	Instructions
F-6	Switch SIM card platform	S-3	Default connection 3.0 SIM card official platform Adjust to S-2 to connect to the 2.0 SIM platform Adjust to S-4 to connect to 3.0 SIM test platform (it will not take effect until n-1 reacquires the network)



F-5	Force a reswipe of the initial card	in-0	Set to in-1 Save data exit (power-off restart does not save)
F-4	Clear all	F-0	Set to F-1 to clear all data except initial card and calibration parameters
F-3	Billing mode	o-1	o-0 metering; o-1 timing; o-2 one-click start
F-2	Test mode	t-0	Set to t-1 for virtual load on (power off does not save)
F-1	Maximum charging time (hours)	12H	0-24H
F0	Maximum charge time (minutes)	0min	0-59min



3 Instructions

3.1 Button Indicator

Steady on	Flash	Not bright
Idle	At work	Breakdown

3.2 Consumption Mode

Type	Default consumption standard	Renewal	Consumption switch	Steps to use
Local Card	One dollar for four hours	Support	Open by default	First use: 1. Connect the battery car 2. Press the appropriate button 3. Pay by card Renew: 1. Press the appropriate button 2. Voice announcement "Charging, renew please"
Virtual Card	1 yuan for 4 hours	Not supported yet	On by default	



				swipe card" 3. Renew by swiping your card
Phone	One dollar for four hours	Not supported yet	There is no	1. Connect the battery car 2. Scan the code on your phone and select the appropriate outlet 3. Pay

3.3 Interface display

Initial interface: display network type, year, month, time, voltage, temperature

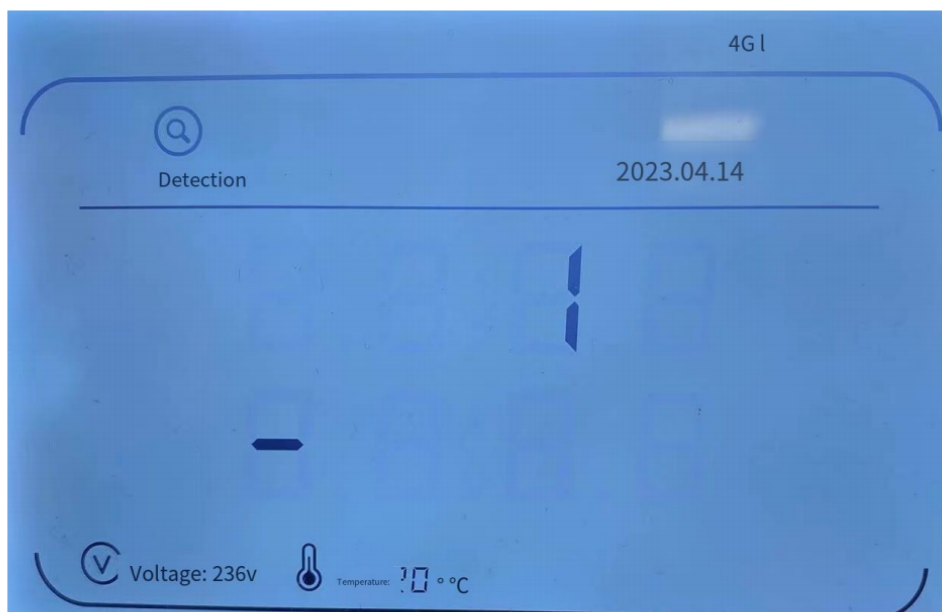


3.1.2. Display of credit card balance

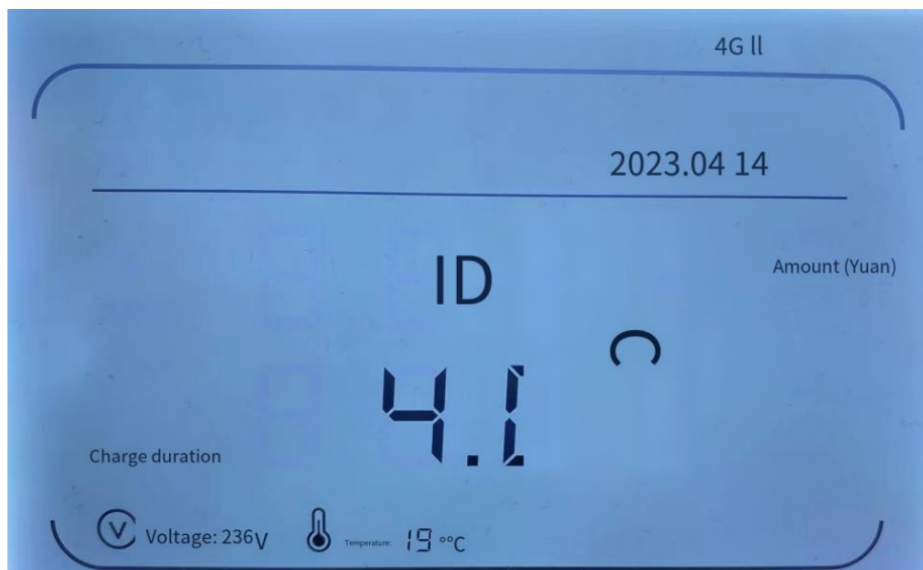


3.1.3. Checking socket 1: Voice announcement checking socket

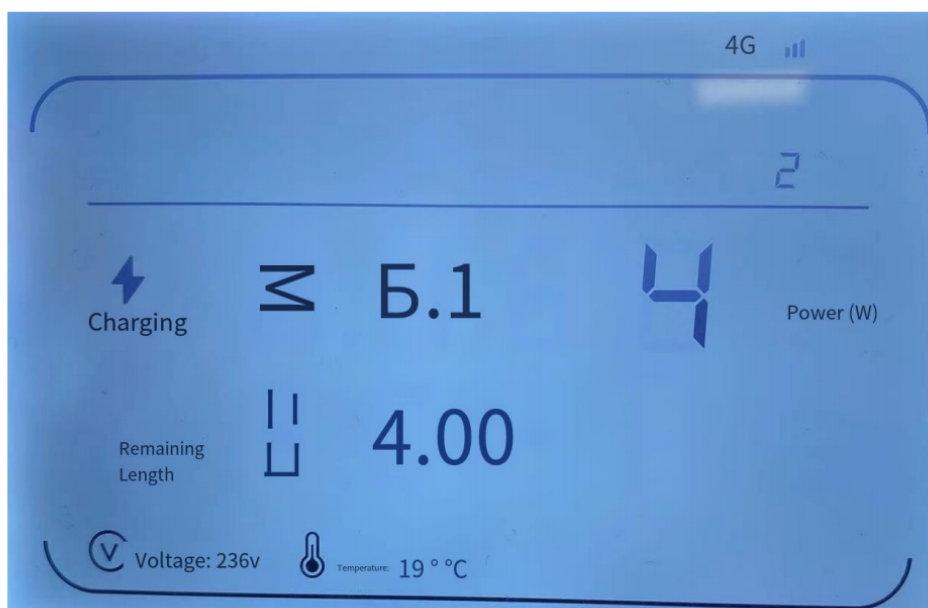
Please wait



3.1.4. Successful detection of the socket: display 1 yuan for 4 hours



3.1.5. Click Charging channel 2 to check the power and remaining time of the device:

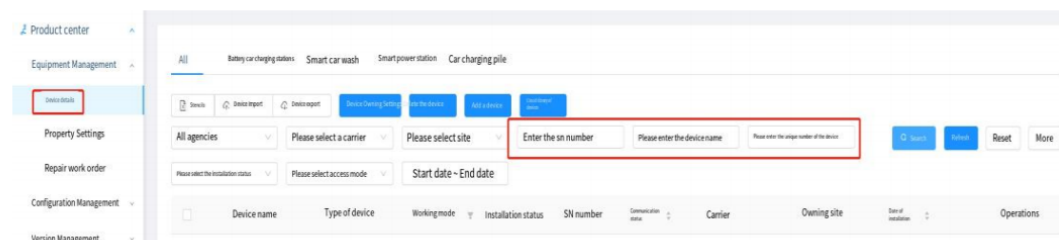




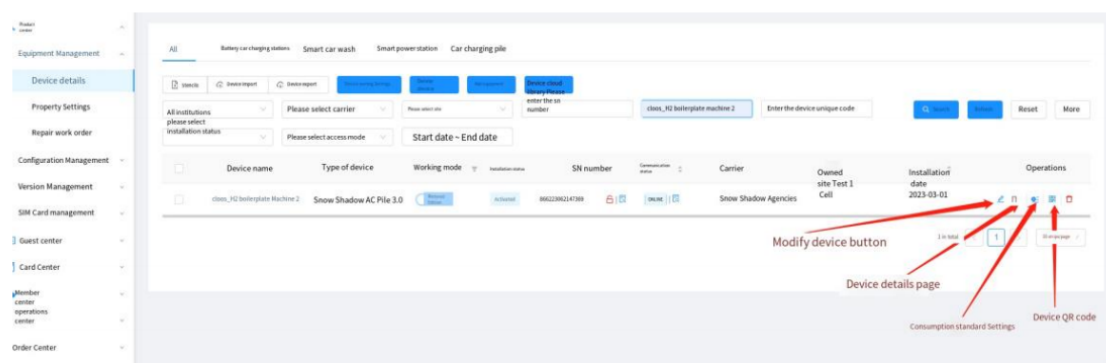
4. Parameter setting

4.1 PC Platform operation instructions

4.1.1 PC Platform Settings page - Log in to iot Management and control platform device details - Enter SN/code/device name to search



4.1.2 Device operation button



4.1.3 Editing the Device Page



Editing equipment



Device name: cloos_Z4 prototype

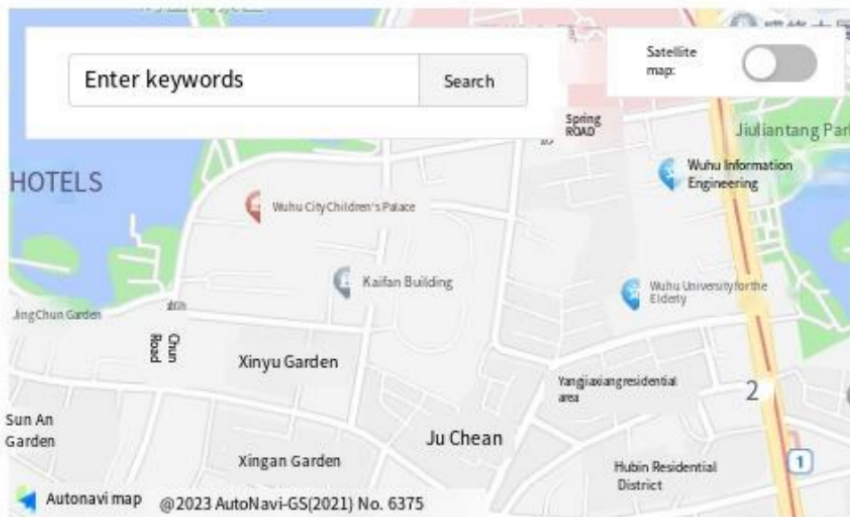
Number of sockets: 12

Socket starting value: 1

Socket end value: 12

Where the equipment is located:

Please select Location



Cancel

OK

4.1.4 Device Details page

Device details

2. Device details

3. Top control

4. Self action

5. Self recovery program

< Back

Device name	cloos_Z4 prototype	Device access method	Device parameter query	Self-built platform	Device parameter setting
Device unique code	8523155502887502	Bind the device SN		CSRS light	
Device type	2	Hardware version			
Affiliated organization	Loan Chong	Software version			
Carrier you belong to	Within the company	Owned sites			
Installation time	2023-04-20 08:46:20	Socket start-stop range			1 to 12
Base service fee due time	2023-04-30 23:59:59				

Device remote operation button

Charging station Sockets

Free Free Free Free Free Free Free Free Free Free Free leisure

1 2 3 4 5 6 7 8 9 10 11 12

Sockets marked with this symbol are manually bound QR codes

1. Out of QR code

Recovery Stopping Restart Remote boot Device upgrade Backward user

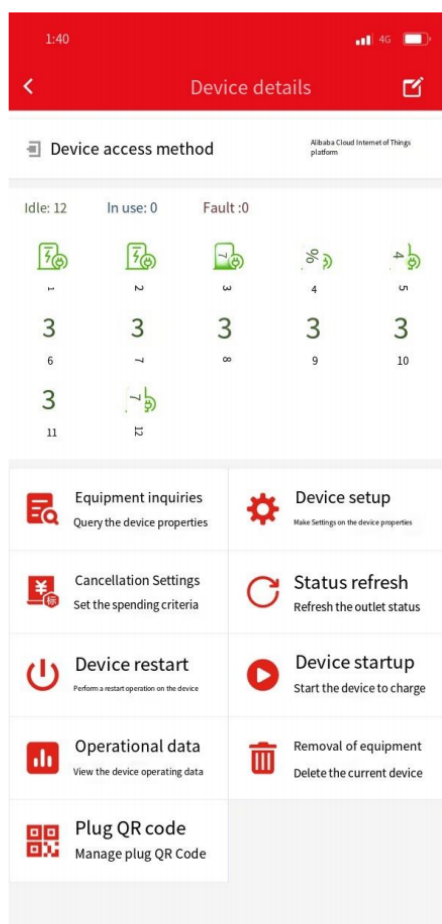
0 12 0

Jobs Free Malfunctions



4.2 Mobile platform operation instructions

4.2.1 Log in to the cloud control Zhaopin, search for the device and enter the device details page



4.3 Installation Instructions

When installing a new device for the first time, you need to add a SIM card and a new device to the platform before powering on the device. Otherwise, the device may fail to be



online

5 Function Description

5.1 Full Power Off

Full power off parameters include power and duration, the default is 7W 60min. If the charging power is lower than 7W for 60min, it is judged as full power off

5.2 No-load power-off

No-load power-off parameters include power and duration, the default is 0.5W 20S. If the charging power is lower than 0.5W for continuous 20S, it is judged as no-load power-off

5.3 Limit Power

The limit power indicates the maximum charging power allowed by the device, which is 1000W by default. If the charging power is greater than 1000W, it is judged as overload power off

5.4 Standard Power

Standard power only takes effect in timing mode, the default is 220W, if the charging power is greater than 220W,



the charging time will be accelerated accordingly

5.5 Maximum charging time

The maximum charging time indicates the maximum charging time allowed by the device for a single consumption. The default is 12 hours. If the charging time reaches 12 hours, it is considered as overcharge

5.6 Temperature Alarm

The alarm temperature can be set on the Internet of Things management and control platform. The default value is 70°C. If the temperature of the motherboard is higher than 70°C, the device will stop working actively and resume working when the temperature is lower than 70°C

5.7 Local card refund

When the local card refund switch is turned on, but the order that has not been refunded for more than 7*24H after the end of charging will be reported voluntarily, and no refund will be allowed

5.8 Power off memory

When the device has a channel working, if there is a



power failure, the channel will continue to work after the power is restored, and the working time and power will be remembered

5.9 Stop/Resume (Can only be used when no channel is working)

The iot platform can forcibly "stop" the device from working. After "stop", the device is in a faulty state and cannot work. Click "Restore" to resume normal work

5.10 Remote Upgrade

The program can be remotely upgraded on the iot management platform without affecting the channel work

5.11 Obtain network parameters again

Swipe the Settings card or press the Settings button on the panel inside the case for 3-6S

5.12 Manual soft reboot

Mainly used when the device is abnormal, you can directly restart the device without power off by pressing the button. Press button No. 7 first, and press button No. 12 for 6s within 3s to restart the device